

**LANNING'S FILL THE GRILL  
WEEKLY GIVE-A-WAY**

**Enter to Win:**

- 4 - Lanning's Ad Steaks
- 1 - 5 lb. Bag Idaho Potatoes &
- 1 - 6" Cream Pie from Simply Sweet Bakery

1033 Newark Road (State Route 13)  
Mount Vernon, Ohio

**LANNING'S**

**FOODS**



**Boneless  
Pork Loin  
Roast** \$ **1<sup>99</sup>** lb.



**BUTCHER  
BLOCK**

Beef  
**Cube  
Steaks**  
\$ **4<sup>99</sup>** lb.

Beef  
**For  
Stew**  
\$ **4<sup>99</sup>** lb.

Boneless  
**Chicken  
Breast**  
10 lb. Bag \$ **1<sup>99</sup>** lb.  
Lesser Amounts \*2.39lb.

All Beef  
**Franks**  
5 lb. Pack  
\$ **17<sup>95</sup>** ea.

Boneless  
**Country  
Ribs**  
\$ **1<sup>99</sup>** lb.

**DELI  
BAKERY**

Homemade  
**Macaroni  
Salad**  
\$ **3<sup>49</sup>** lb.

Premier  
**Potato  
Salad**  
\$ **1<sup>99</sup>** lb.

**Tuna  
Salad**  
\$ **5<sup>99</sup>** lb.

Wampler's  
**Chicken  
Salad**  
\$ **5<sup>99</sup>** lb.

Lanning's Own  
**BBQ  
Ribs**  
\$ **4<sup>99</sup>** lb.



**Broccoli**  
\$ **99¢** Bunch

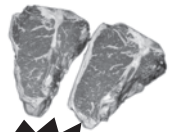
**DELI**



**Hard Salami  
& Pepperoni**  
\$ **5<sup>99</sup>** lb.



12 oz.  
**T-Bone  
Steak**



\$ **5<sup>99</sup>** lb.  
6 Pack \$35.34 ea.

**Provolone  
Cheese**  
Chunk or Sliced



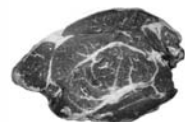
\$ **3<sup>99</sup>** lb.



**Fresh  
Ground Chuck**  
5 lbs. & Up  
\$ **3<sup>49</sup>** lb.

Lesser Amounts \$3.69lb.

**Boneless  
Chuck  
Roast**



\$ **3<sup>99</sup>** lb.



**LUNCH SPECIAL**  
Mon. - Thurs. - 10am-2pm  
**Double Cheeseburger w/works** \$ **4<sup>99</sup>** ONLY  
**Chips, Cookie,**  
**12 oz. Soda or Lanning's Water**

OHIO DIRECT



DEBIT CARDS

740-397-2751

**PRODUCE**

**Head  
Lettuce or  
Celery**  
\$ **89¢** ea.

Local  
**Green  
Peppers**  
\$ **2/\$1<sup>00</sup>**

Local  
**Sweet Corn**  
\$ **10/\$4<sup>00</sup>**

**Red  
Potatoes**  
5 lb. Bag \$ **2<sup>49</sup>** ea.

**Peaches,  
Plums or  
Nectarines**  
\$ **1<sup>49</sup>** lb.

**FROZEN/  
DAIRY**

2-1 Ground  
**Beef Patties**  
8 Count \$ **13<sup>19</sup>** ea.  
4 Count \$ **6<sup>94</sup>** ea.

4 Pack  
**Mama Rosa's  
Pizza**  
\$ **2<sup>99</sup>** ea.

40 oz.  
**Fajita Blend  
Veggies**  
\$ **3<sup>99</sup>** ea.

2 lb. Hillandale  
**Shredded  
Cheese**  
\$ **6<sup>99</sup>** ea.

Yoder's ~ 24 oz.  
**Corn  
Meal Mush**  
\$ **1<sup>59</sup>** ea.

BECOME A LANNING'S E-CUSTOMER - TEXT LANNINGS TO 22828 TO RECEIVE OUR WEEKLY AD & VALUABLE COUPONS BY E-MAIL

**CHECK OUT OUR  
BUTCHER BLOCK**

Special Meat Cuts are Lanning's Specialty!

**CHECK WITH US FOR ALL  
YOUR CATERING NEEDS...**  
Weddings, Graduations, Reunions, etc.

Prices effective  
August 14 - August 20, 2017

Mon. 14	Tues. 15	Weds. 16	Thur. 17	Fri. 18	Sat. 19	Sun. 20
---------	----------	----------	----------	---------	---------	---------

visit us at [www.Lannings.com](http://www.Lannings.com)

Like us on Facebook

**HOURS:** Mon. - Sat. 8a.m.-7p.m., Sun. 10a.m.-5p.m.

